

**Student or Staff with Symptoms in School  
(Do not attend school with symptoms)**

NO

**Are they fully vaccinated?\***

YES

**NOT FULLY VACCINATED**

Do symptoms include:

- Fever (100°F or more) chills, or shaking chills
- Difficulty breathing or shortness of breath
- New loss of taste or smell
- Muscle aches or body aches
- Cough (new or undiagnosed)
- Sore throat (in combo w/ other symptoms)
- Nausea, vomiting, diarrhea (in combo w/ other symptoms)
- Headache (in combo with other symptoms)
- Fatigue (in combo with other symptoms)
- Nasal congestion or runny nose (not due to other known causes, such as allergies) when in combo w/ other symptoms)

**FULLY VACCINATED**

Do symptoms include:

- Fever (100°F or more) chills, or shaking chills
- Difficulty breathing or shortness of breath
- New loss of taste or smell
- Muscle aches or body aches

YES

NO

**No COVID testing required**

NO

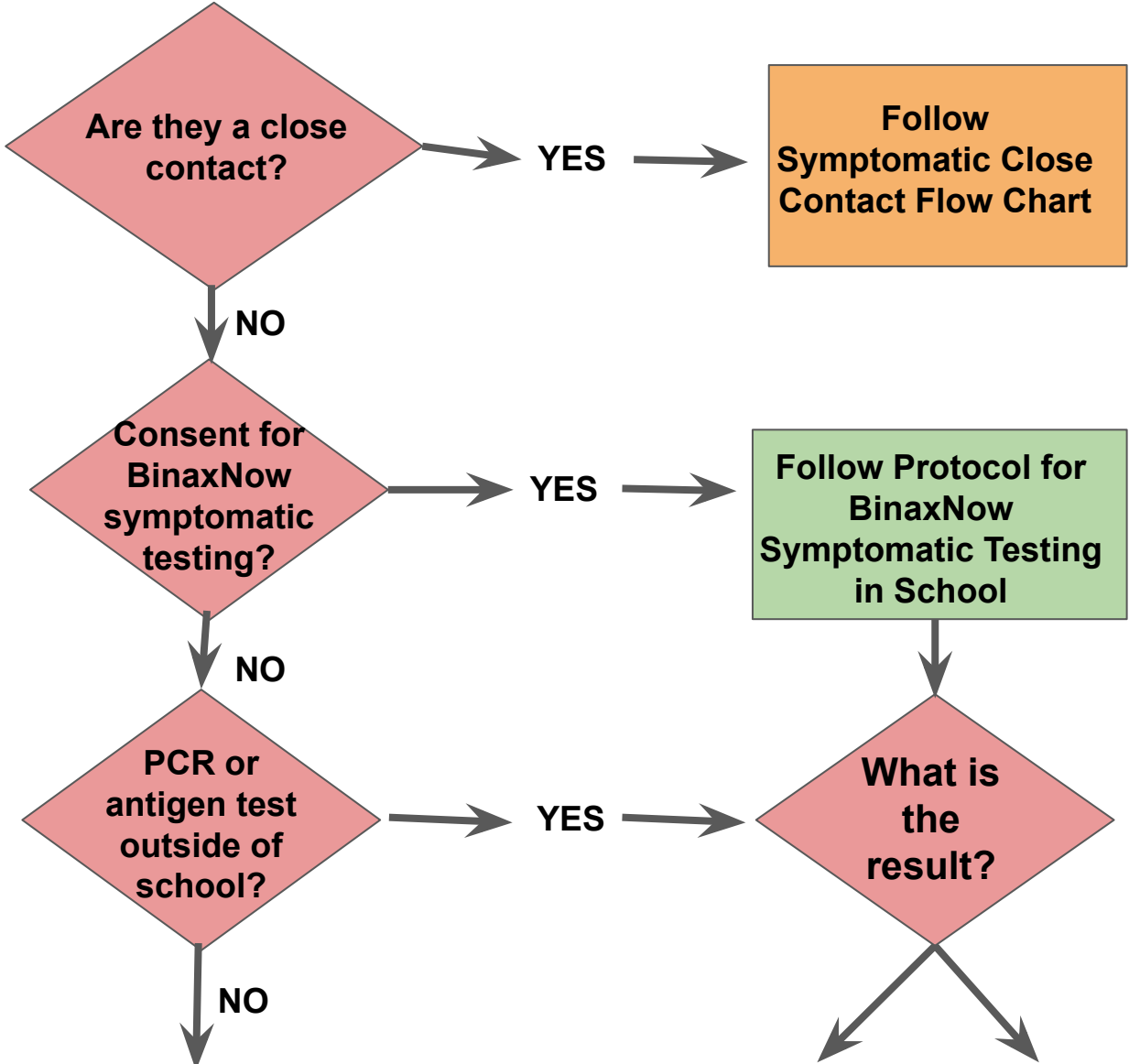
**No COVID testing required**

YES

**Follow the flow chart:  
Individuals with COVID-19 Symptoms**

\*At this time fully vaccinated is defined by DESE as 2wks following the completion of the Pfizer or Moderna series or 2wks following single dose of Johnson & Johnson

**Individuals with COVID-19 Symptoms (not close contact)**



**Symptoms w/ NO TESTING**

- Isolate at least 5 days from symptom onset
- Must be without fever for 24 hours without use of fever-reducing medication
- Have improvement of symptoms
- Return to school on the 6th day

**OR**

**Alternative Diagnosis**

- Return to school with written note (MD, NP)

**COVID POSITIVE**

- Trace close contacts at school (see checkoff list)
- Isolate for a min of 5 days
- May return to school on Day 6 if:
  1. No fever x 24 hours
  2. Symptoms improved
  3. Must be able to consistently mask
- If continued symptoms then return to school when improved
- If unable to mask, then return on Day 11.

**COVID NEGATIVE**

**IF mild symptoms:**

- May stay in school
- Next day nurse check

**IF moderate symptoms:**

1. **Alternative diagnosis**
  - Return to school with written note (MD, NP)
  - No fever x 24 hours
2. **Outside PCR or Antigen Test**
  - Symptoms must be improved
  - Antigen test can be self-administered and does not need to be proctored or performed by a HCP (home test is ok)

## POSITIVE CASE CHECK-OFF LIST

- What is the day the test was administered? (Day 0 if asymptomatic)
- What kind of test was administered? If antigen, then a confirmatory PCR is recommended but might not be attainable
- What is the symptom onset date? (Day 0 in most cases)
- When was the student/staff last in school? (Determine school exposure days by including the 2 days prior to symptom onset if present in school)
- Any siblings/household members are in-district? (inform school nurse and inform parent/guardian that siblings/household members must be dismissed from school)
- Any community close contacts who are students/staff in-district
- Any lunch, sports, after school activities, and close friends who should be identified as in-school close contacts (reach out to school staff as appropriate)
- Fill out tracking form and inform parent/guardian when student can return to school and answer any additional questions
- Send google form to teachers identifying the student and days contagious in school
- Upload and rename the nurse contact tracing sheet for the positive case and fill in contagious days in school and lunch/sports/other close contacts at top
- Email teacher(s) about student's need to be absent from school
- Copy & Paste teacher responses to google form onto the nurse contact tracing form
- Identify 0-3 feet classroom close contacts who are fully vaccinated and/or have had COVID-19 in the past 90 days (update nurse contact tracing sheet drop down menu)
- Call the parent/guardian of all 0-3 feet close contacts who are not exempt from testing/quarantine protocols to determine if they give consent for Test & Stay and/or discuss guidance and eligibility for Test & Stay/Quarantine based on protocols. (update drop down menus on the nurse contact tracing sheet)
- Ensure that notification emails are sent to all close contact students, staff, and the COVID distribution email list

## Asymptomatic Close Contacts to Positive Cases of COVID-19 In-School Exposure

Are ALL 3 of these conditions true?

- Exposed indoors
- Within 48 hrs of symptom onset or positive test date
- Within 6 feet for 15 minutes (cumulative over 24h)

NO

Not a close contact

YES, Indv is a close contact

Are any ONE of these exemptions true?

- Asymptomatic AND fully vaccinated\*
- Exposed in a classroom and at least 3 feet apart while both individuals were masked
- Exposed while on the bus and both individuals masked
- Close contact has had COVID-19 within the past 90 days and recovered with no current symptoms

YES

No testing or quarantine  
Email Notification to Parent

NO

\*At this time fully vaccinated is defined as 2wks following the completion of the Pfizer or Moderna series or 2wks following single dose of Johnson & Johnson

Consent for Test and Stay?

NO

YES

### TRADITIONAL PROTOCOL

Quarantine for 5 days from exposure, return on Day 6 if:

- Remains asymptomatic
  - Monitor symptoms and strict mask use through Day 10, isolate if symptoms develop
  - If unable to mask and not planning to test, then quarantine for 10 days, return to school on Day 11
  - Best practice is to test on Day 5. Antigen test can be self-administered and does not need to be proctored or performed by a HCP
  - If unable to mask and testing on Day 5, return Day 8\*
  - Ask parent to communicate all test results to the school nurse
- \* Consistent w/ old guidance

### TEST AND STAY PROTOCOL

Close contacts stay in school if they:

- Remain asymptomatic
- Wear masks at school at all times (when not eating and drinking)
- Negative BinaxNow each school day through Day 5 after exposure (if fall on weekend, test on return to school)
- May only attend weekend school events if BinaxNow test that day
- Quarantine outside of school hours
- Monitor symptoms through Day 10 and isolate if symptoms develop

**Asymptomatic Close Contacts to Positive Cases of COVID-19**

**COMMUNITY EXPOSURE**  
**Not eligible for Test and Stay**

Are **ALL** 3 of these conditions true?

- Exposed indoors
- Within 48 hrs of symptom onset or positive test date
- Within 6 feet for 15 minutes (cumulative over 24h)

NO

**Not a close contact**

YES, Indv is a close contact

Does the close contact student or staff meet the definition of fully vaccinated for the community (MDPH)?

Boosted **OR** Pfizer/Moderna series completed within 6 months  
**OR** Johnson & Johnson primary injection within 2 months

YES

Wear mask x 10 days, test on Day 5 if possible (applies to both school and community)

NO

Does the close contact student or staff meet the definition of fully vaccinated for K-12 (DESE)?

2 weeks following the completion of the Pfizer or Moderna series or 2 weeks following a single dose of Johnson & Johnson Janssen Vaccine

**OR** had COVID-19 within the past 90 days and recovered with no current symptoms

YES

Wear mask x 10 days when in school, Should Q X 5, then mask x 5 days in Community

NO

**TRADITIONAL PROTOCOL (NOT eligible for Test and Stay)**

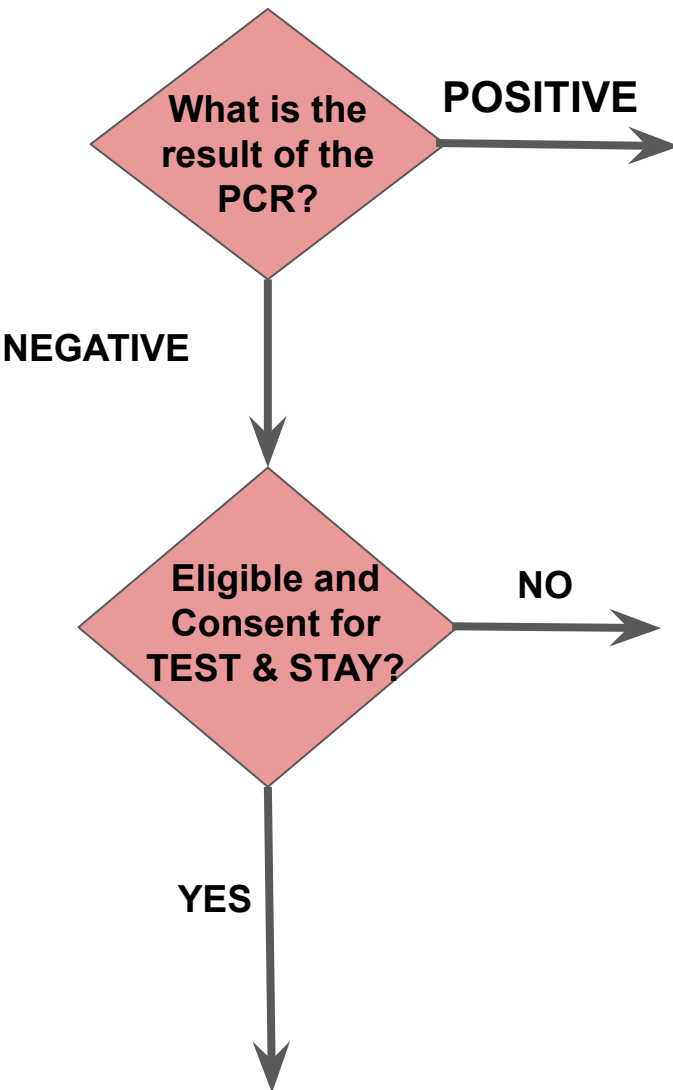
Quarantine for 5 days from exposure, return on Day 6 if:

- Remain asymptomatic
- Monitor symptoms and strict mask use through Day 10, isolate if symptoms develop
- If unable to mask, then quarantine for 10 days, return to school on Day 11
- Best practice is to test on Day 5. Antigen test can be self-administered and does not need to be proctored or performed by a HCP
- If unable to mask and testing on Day 5, return Day 8 (consistent w/ old guidance)
- Ask parent to communicate all test results to the school nurse

## ALL Close Contacts with Symptoms

### ALL Close contacts with symptoms:

- Must Isolate
- Must get a PCR to rule out COVID
- Can return to original DESE Protocol with a negative PCR after symptoms improve and fever-free



### COVID POSITIVE

- Trace close contacts at school (see checkoff list)
- Isolate for a minimum of 5 days
- May return to school on Day 6 if:
  1. No fever x 24 hours
  2. Symptoms improved
  3. Must be able to consistently mask
- If continued symptoms then return to school when improved
- If unable to mask, then return on Day 11.

### COVID NEGATIVE w/ NO Test & Stay

Return to protocol that was followed after exposure

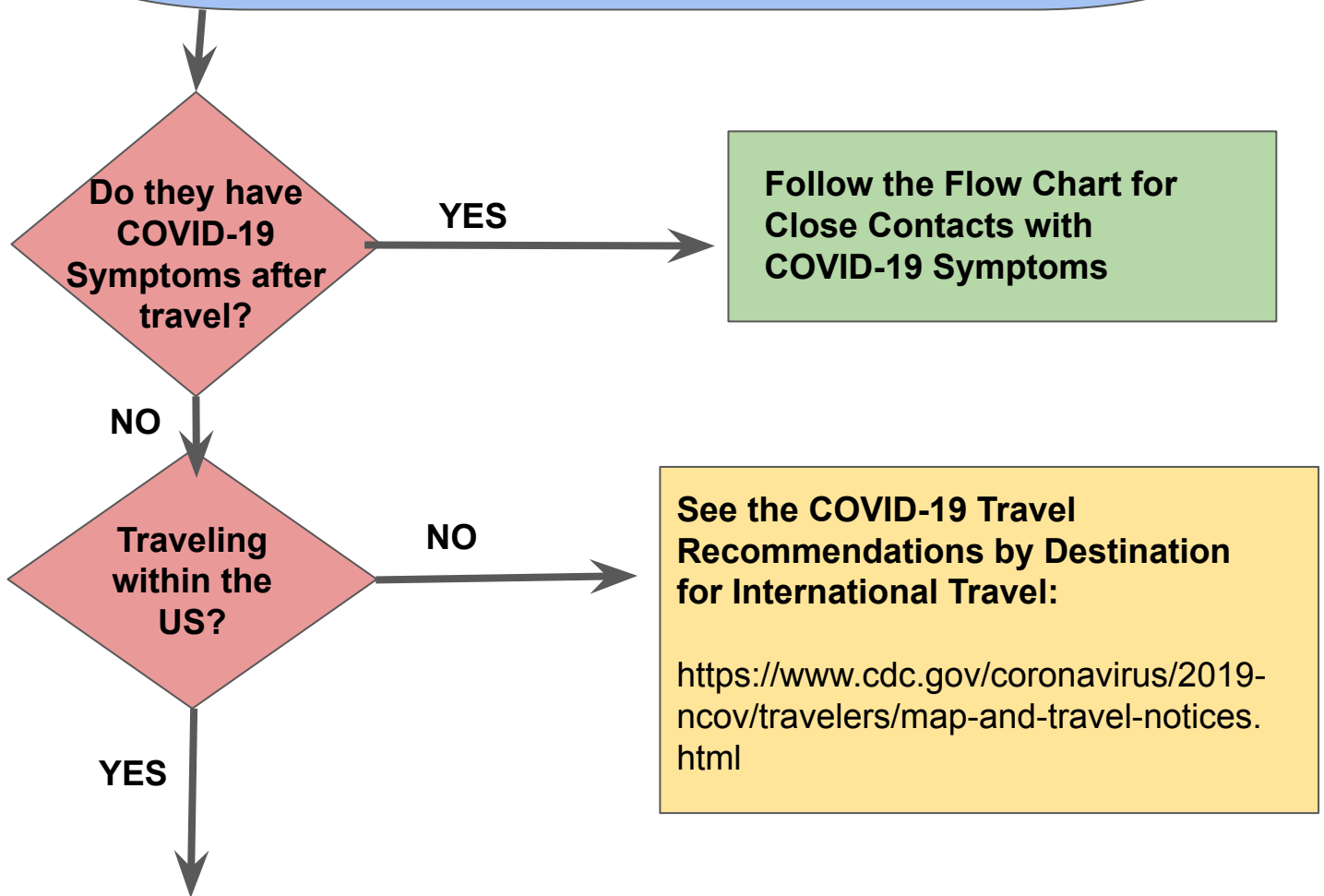
Student/Staff must:

1. Remain asymptomatic
2. Monitor symptoms and strict mask use through Day 10 (Isolate again if symptoms develop)
3. Ask parent to communicate all test results to the school nurse
- 4.

### TEST AND STAY PROTOCOL

Close contacts from in-school exposure w/ symptoms may participate in Test & Stay with a Negative PCR after symptoms improve.

# Travel Recommendations from the CDC



## CORONAVIRUS DISEASE 2019 (COVID-19)

### Domestic Travel

RECOMMENDATIONS AND REQUIREMENTS

Not Vaccinated

Fully Vaccinated

Get tested 1-3 days before travel



Get tested 3-5 days after travel and self-quarantine for 7 days. Self-quarantine for 10 days if you don't get tested.



Self-monitor for symptoms



Wear a mask and take other precautions during travel



[cdc.gov/coronavirus](https://www.cdc.gov/coronavirus)